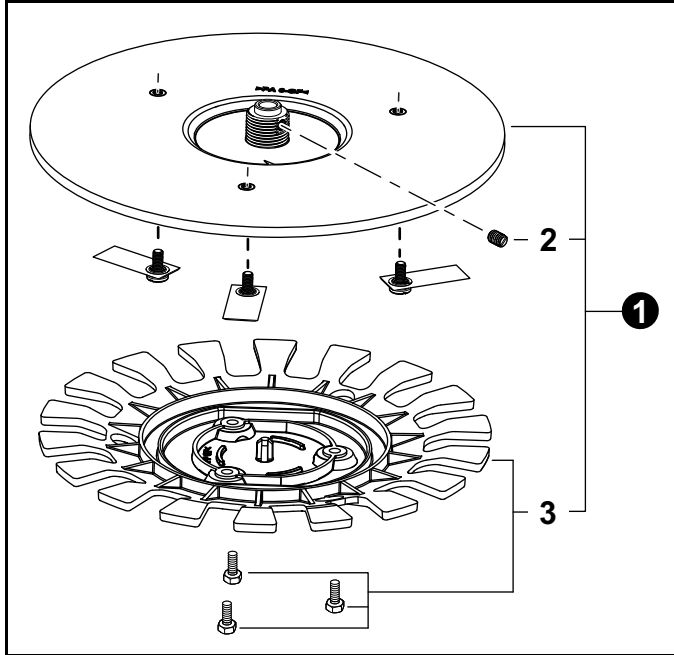


Golf Ball Protector Cutting Disc Kit



NO.	PART NUMBER	QTY.	DESCRIPTION
1	99988801818	1	GOLF BALL PROTECTOR CUTTING DISC KIT
2	P021053390	1	+ SET SCREW - 5 PIECES
3	P021053380	1	+BLADE PROTECTOR KIT
-	YB06220026	1	+BLADE SET - 15 PIECES

Installation Procedure

⚠ CAUTION

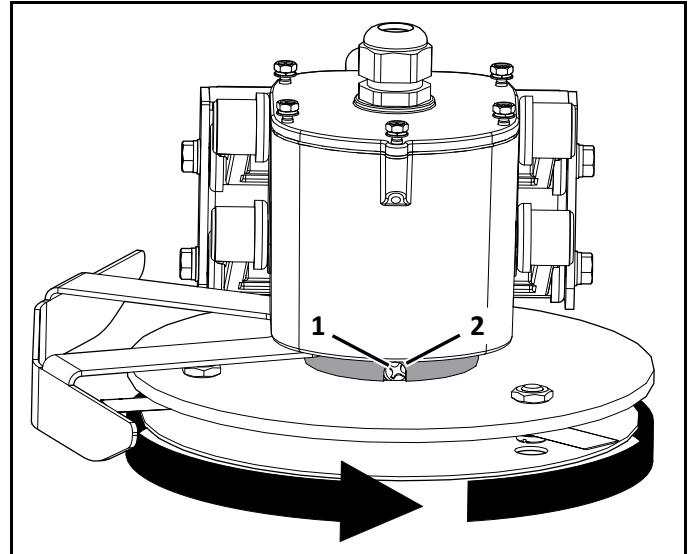
SHARP PARTS AND ROTATING COMPONENTS.

- Wear protective gloves when handling the robot.

Cutting Disc and Guard Removal:

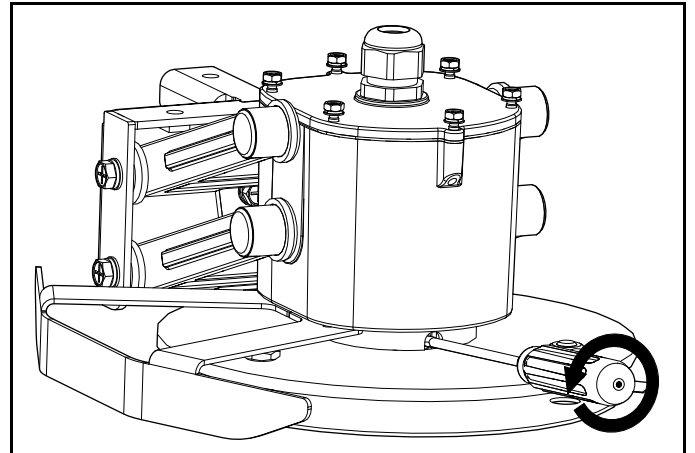
- 1) Turn the robot OFF.

- 2) Rotate cutting disc to align set screw with slot in guard.

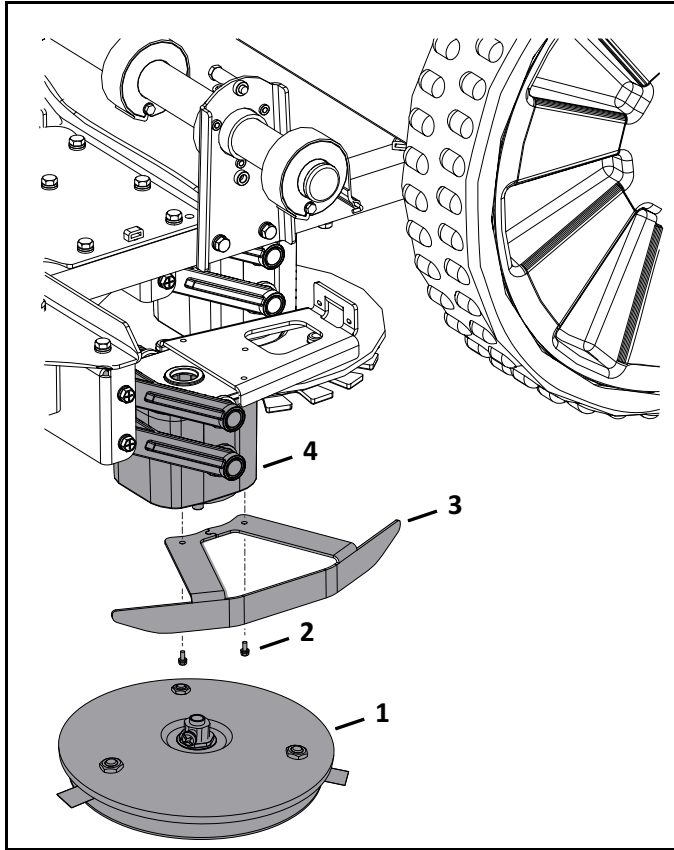


- 1 – Set screw
- 2 – Slot in guard

- 3) Loosen set screw.

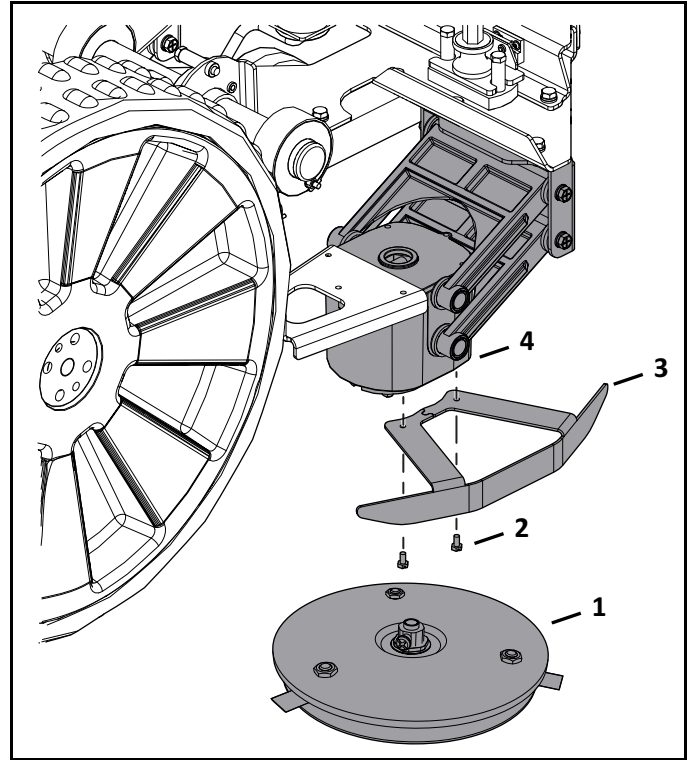


- 4) Remove left front cutting disc and left disc guard from bottom of cutting head assembly.



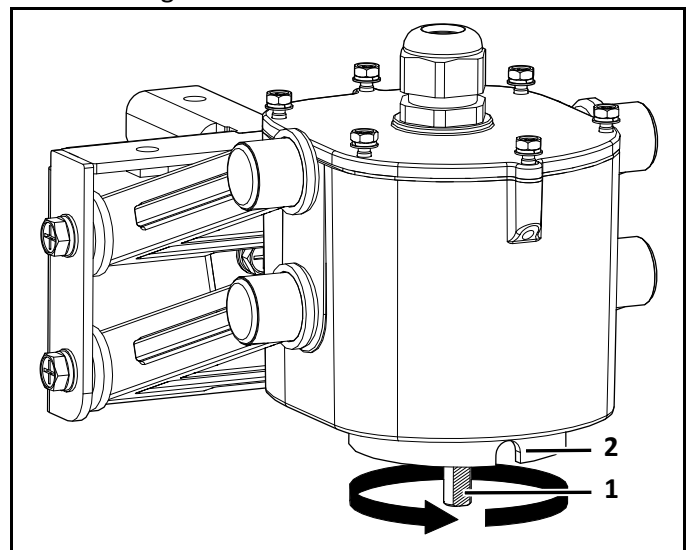
- 1 – Cutting disc
2 – Screw (2X)
3 – Guard
4 – Cutting head assembly

- 5) Remove right front cutting disc and right disc guard from top of cutting head assembly.



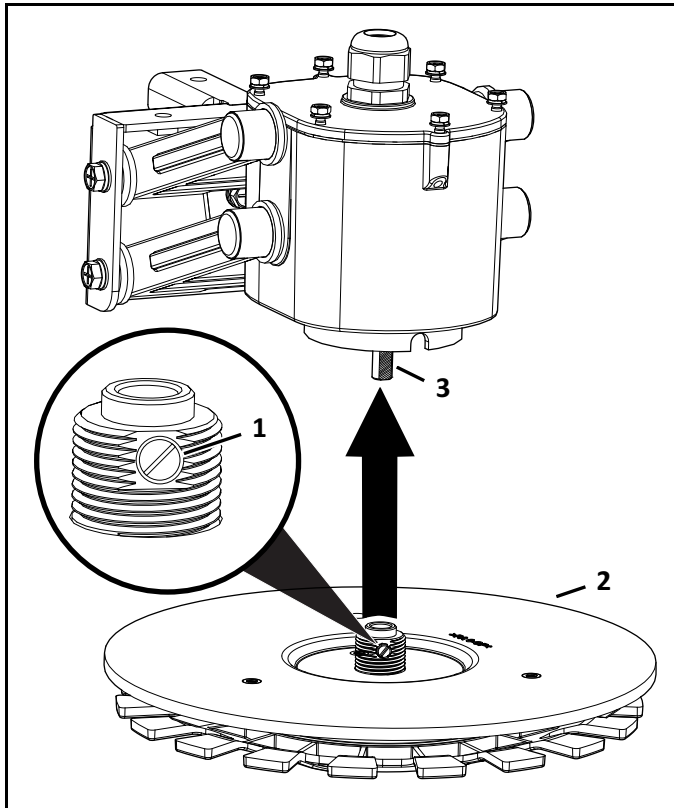
- 1 – Cutting disc
2 – Screw (2X)
3 – Guard
4 – Cutting head assembly

- 6) Rotate cutting head axle to align flat surface with slot in guard.



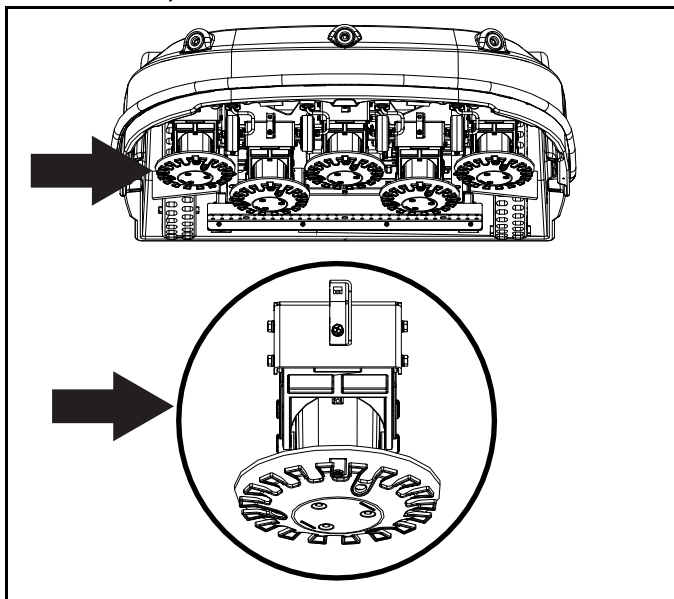
- 1 – Flat Surface
2 – Slot in guard

- 7) Align set screw of new cutting disc with flat surface of cutting head axle. Assemble new cutting disc, securely tighten the set screw.



- 1 – Set screw
 2 – Cutting disc
 3 – Flat surface

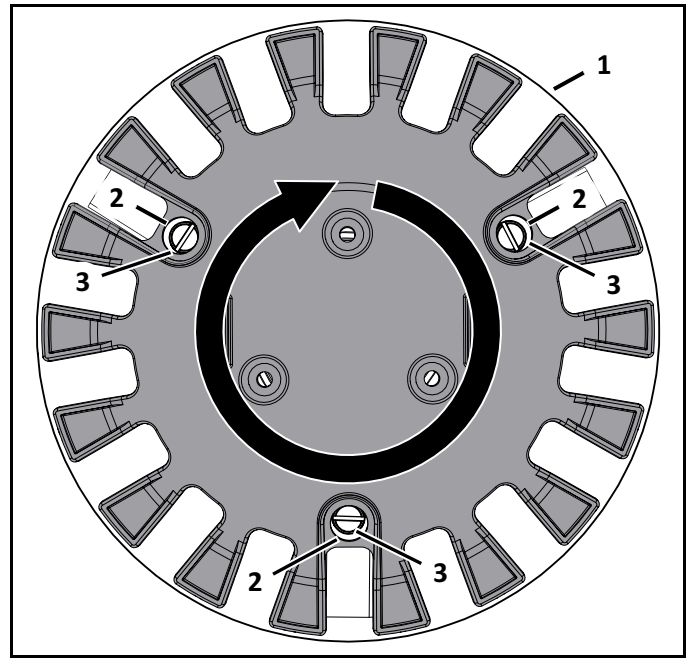
Final assembly on robot.



Blade Replacement

NOTE: Bottom view of cutting disc shown.

- 1) Rotate guard to align holes over blade retention screws.



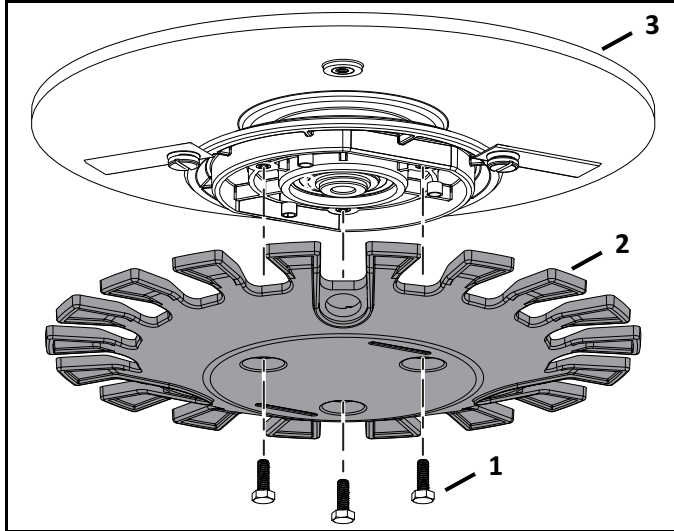
- 1 – Guard
 2 – Holes
 3 – Screws

- 2) Remove existing blade.
 3) Assemble replacement blades to cutting disc. Securely tighten screws.

Guard Removal and Replacement

Removal:

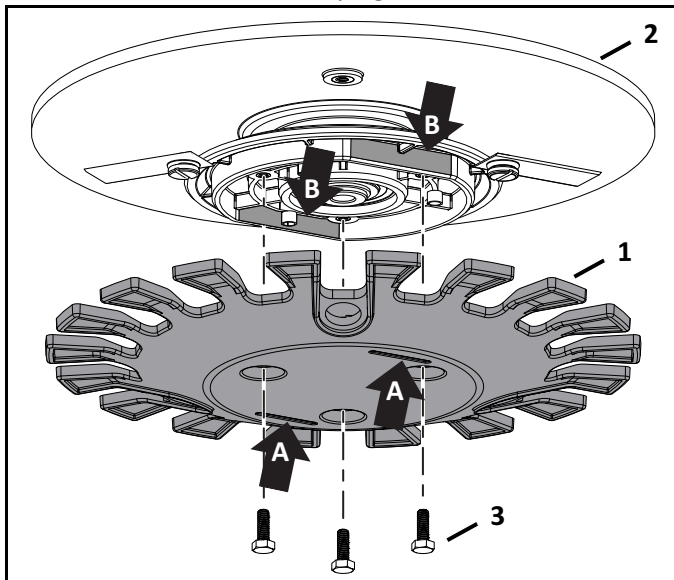
- 1) Remove screws and guard from cutting disc.



- 1 – Screws
- 2 – Guard
- 3 – Cutting disc

Replacement:

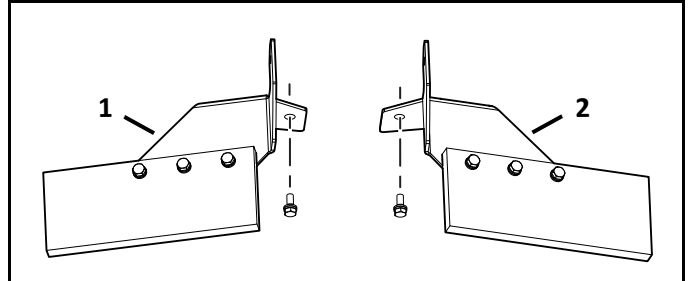
- 1) Line up marks on guard (A) with flat surfaces of cutting disc collar (B).
- 2) Place guard on cutting disc.
- 3) Assemble and securely tighten the screws.



- 1 – Guard
- 2 – Cutting disc
- 3 – Screws

Deviation Flap Kits

Order the Deviation Flap Kits separately from the Golf Ball Protector Cutting Disc Kit.



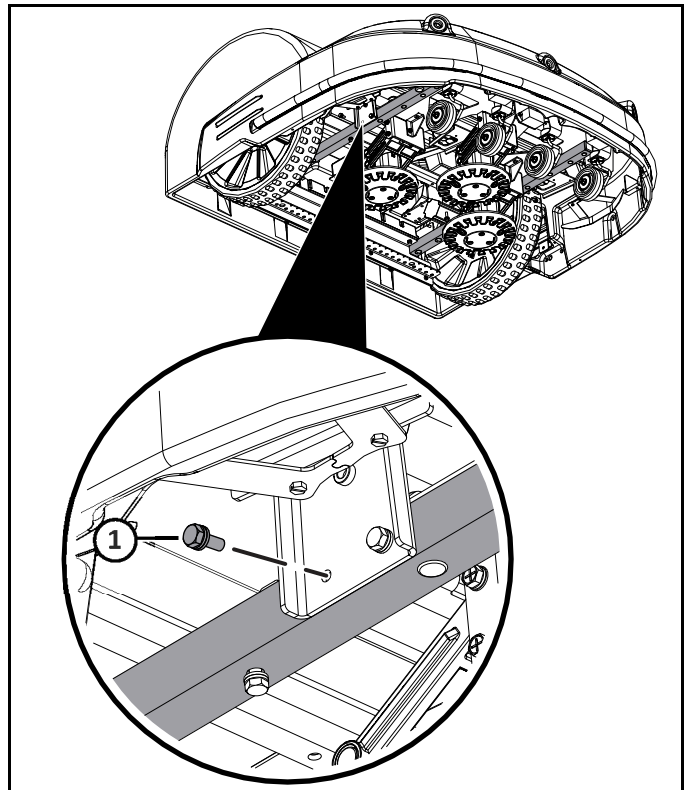
NO.	PART NUMBER	QTY.	DESCRIPTION
1	YB06100021	1	DEVIATION FLAP, RIGHT KIT
2	YB06100020	1	DEVIATION FLAP, LEFT KIT

Installation Procedure

Removal of the cover is not required.

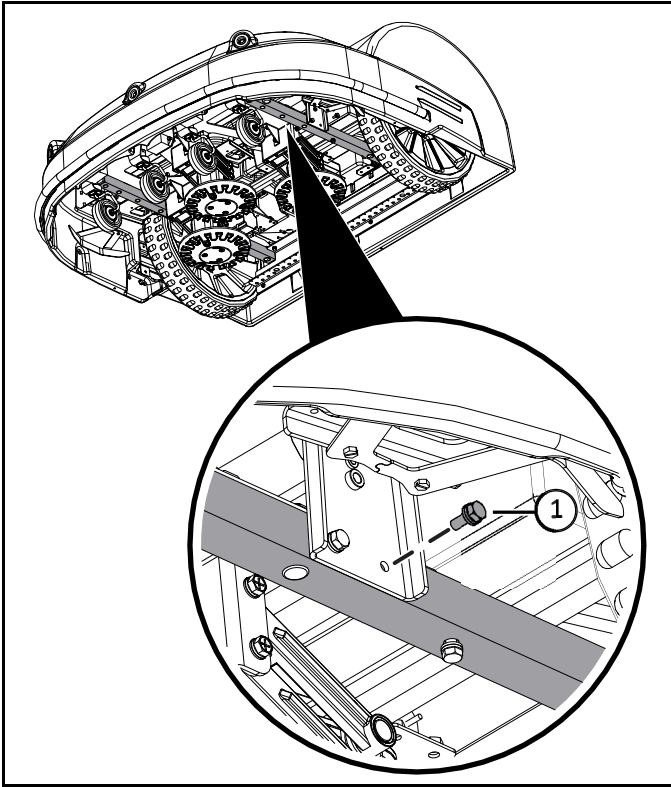
NOTE: The left front and right front cutting head assemblies are not shown for the purpose of clarity.

- 1) Remove screw from right side of chassis at location shown. Retain screw for reuse during assembly.



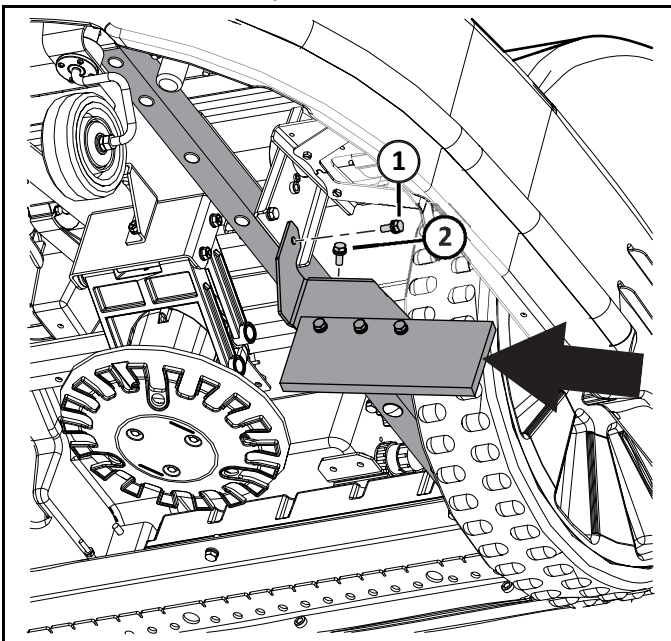
- 1 – Screw

- 2) Remove screw from left side of chassis at location shown. Retain screw for reuse during assembly.



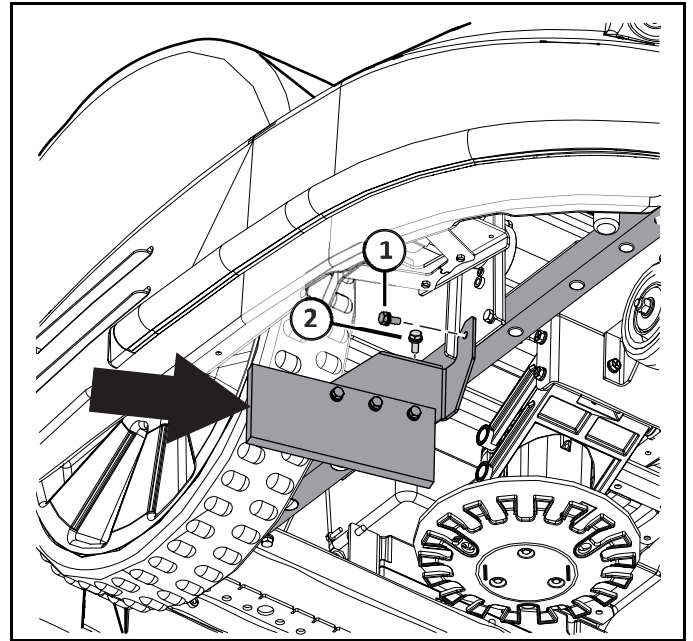
1 – Screw

- 3) Assemble left flap kit to chassis.



1 – Screw (from chassis)
2 – Screw (from kit)

- 4) Assemble right flap kit to chassis.



1 – Screw (from chassis)
2 – Screw (from kit)

Final assembly (bottom view of robot shown).

